

ISO 9001
2015
CERTIFIED



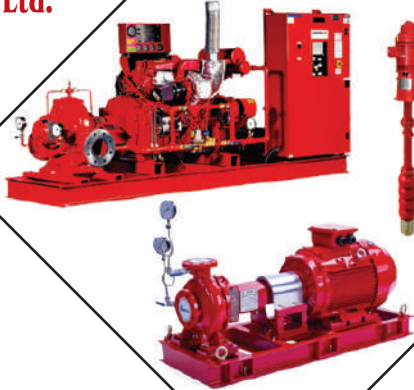
RELIANT

Energy & Safety Technology Ltd.

INDUSTRIAL

COMMERCIAL

RESIDENTIAL



Reliant Energy & Safety Technology Ltd.

We Serve to Save

Corporate Office :
House: 13, Road: 01, Sector: 11,
Uttara, Dhaka-1230, Bangladesh.

Chattogram Office :
R.F Quayum Heights, Zakir Hossain Road,
Kulshi, Chattogram, Bangladesh.

+88 01710 494919
+88 01913 146384

info@reliant-est.com
info.reliant.est@gmail.com
www.reliant-est.com

About Us.

Reliant Energy & Safety Technology Ltd. is specialized in the consultancy, design, supply & installation as well as maintenance of complete range of Fire Protection System, Electrical System, MEP Engineering, Building Automation, Security System, Industrial Pump & Safety Equipment.

It is committed to providing the most comprehensive and reliable Fire Fighting Equipment's, Power, HVAC and Security system to protect & secure lives and properties. Our customers are assured of the best from design, manufacturing to delivery, installation and service.

Our team members/engineers are professionals and skilled technicians are well experienced in interpreting specifications and requirements of enforcement authorities. With the understanding of those requirements our engineers and technicians with support installation as well as provide product training and efficient maintenance to ensure optimum performance of the systems.

Reliant Energy & Safety Technology Ltd. provides full range of Fire Protection, electrical, mechanical & security system product those all are imported from International Market to International Standards such as BNBC, Underwrite Laborites (UL), Factory Mutual (FM), British Standard (BS), European Standard (EN) Australian Standard (AS), Singapore Standard (PSB), Malaysian Standards (MS), LPCB, CE, ISO-9002, NFPA.

Reliant Energy & Safety Technology Ltd. is moving now into the next phase of its growth and development. While we strive to be one of the country's most respected names in the Field of Fire Protection, Electrical, MEP, Digital Security and modern Fire Fighting System, our dream is to never stop in the field of success. We envision a future where we will be known as a market leader for its Quality, Reliability and excellent customer support.

We continue to design value added, innovative products for new and existing valued customers. In addition, we continue to invest resources and energy into operational development initiatives that will support our ambitions organic growth targets and our efforts center on strategic sales growth, material management, systems and business process optimization, manufacturing, excellent technical developments and quality assurance. Our progress is made possible by the dedication and efforts of our clients so to this end we will also continue our focus in development our philosophy is based on product excellence, Innovation and Quality policy. Quality comes first is our first is our guiding principle.

This is an exciting time for all of us at **Reliant Energy & Safety Technology Ltd.** to achieve our goals; we will continue creating value for customers as we strive to build upon our leadership position in the MEP, Security & Fire Fighting industry.

Corporate Mission, Vission

Empowering customer to secure life & property by delivering innovative protection system with electrical solution & knowledge using world class product & service.

To be the best core engineering solution provider in electrical system & protecting life, environment.

OUR Product & Service



Active Fire Protection System

- Fire Fighting Pump Set
- Standpipe & Hose System
- Hydrant & Sprinkler Systems
- Gaseous clean Agent
- Foam Suppression System
- Fire Detection System
- Hypoxic Air Fire Prevention
- Fire Extinguisher
- Fire Blanket



Design



Passive Fire Protection System

- Fire Rated Door
- Rolling Shutter
- Fire Rated Damper
- Fire Rated Drywall
- Smoke & Fire Curtains



Supply



Electrical System

- Transformer
- Sub Station
- HT/LT Panel
- Switchgear/Control room work
- Generator



Installation



Building Management System (BMS)



Annual Maintenance Contract (AMC)



Surveillance System (CCTV)



Access Control & Time Attendance System



Industrial Pump and Accessories



Safety Equipments.

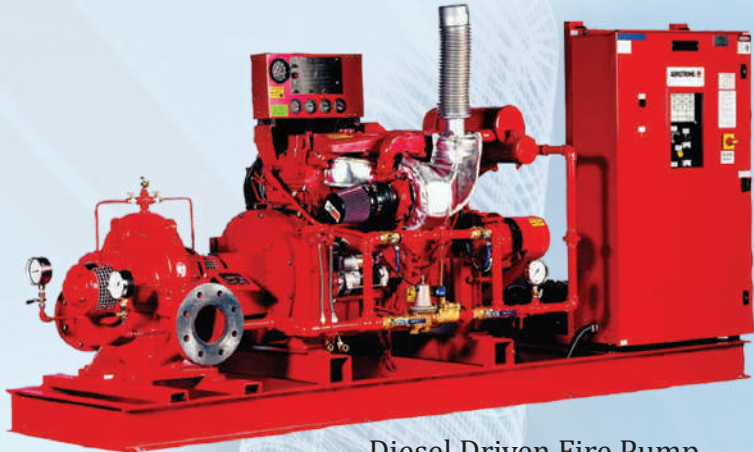


Power & Air Conditioning System

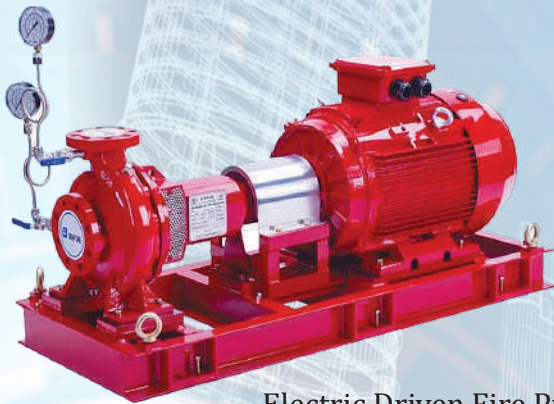


Fire Pump Set

Fire protection system is to protect a building's occupants and minimise the damage associated with fire. While active systems are designed to help fight fires (such as fire alarms and sprinklers), passive fire protection describes the structural measures which prevent the passage of flames and smoke.



Diesel Driven Fire Pump



Electric Driven Fire Pump



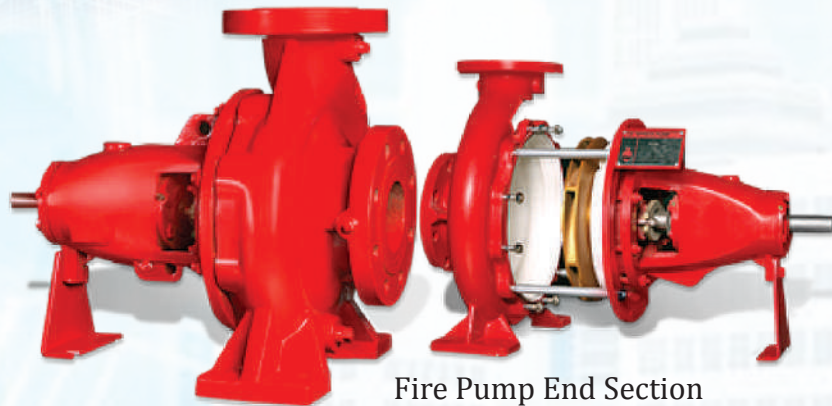
Jockey Fire Pump



Vertical Turbine Pump



Fire Pump Controllers



Fire Pump End Section



Fire Hydrant System Accessories



Fire Hose Cabinet



Hose Reel



Hose Rack Assembly



Hose Nozzle



Fire Brigade Connection



Pillar Hydrant



OS & Y Gate Valve



Landing Valve



Pressure Gauge



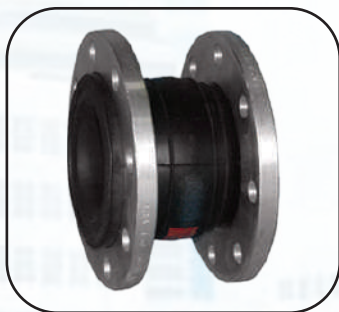
Pressure Switch



Non Return Valve



Y Strainer



Flexible Joint



Supervisory Switch



PRV



Flow Meter



BNBC

RSC RMG SUSTAINABILITY COUNCIL



Fire Detection & Alarm System

Addressable Fire Alarm System:



An addressable fire alarm system is one in which all fire and smoke detection devices in a system are connected and communicate both with each other and a central control monitoring location. This interconnectivity allows the control personnel to identify the location or “address” where the initial detection occurred. The information directs the emergency response team to pinpoint their efforts immediately to the precise location of the developing problem.

Conventional Fire Alarm System:



A conventional fire alarm system uses one or more circuits, connected to sensors wired in parallel. Each device is connected to the control panel with its own wire. You will find one end of the wire connected to the device, and another connected to the control panel. The main advantage of the conventional fire alarm system is that they are cost effective for the smaller applications.



Fire Alarm Control Panel



Smoke Detector



Heat Detector



Multi Detector



Manual Call Point



Repeater Panel



Flame Detector



Beam Detector



Bell



Strobe with Horn

Sprinkler System Accessories

A fire sprinkler system is an active fire protection method, consisting of a water supply system, providing adequate pressure and flowrate to a water distribution piping system, onto which fire sprinklers are connected.



Sprinkler



Grooved Fittings



MS 40-S Pipe



Fire Suppression System

A fire Suppression System, like a fire sprinkler system, is used to extinguish or control fires, and is activated by heat, smoke, or a combination of the two. However, a fire suppression system uses gaseous, chemical, or foam fire suppression agents to suppress the fire, rather than water.



Fire Rated Door & Accessories

A fire Door is a door with a fire-resistance rating used as part of a passive fire protection system to reduce the spread of fire and smoke between separate compartments of a structure and to enable safe egress from a building or structure or ship.



Double Leaf door

Single Leaf door



Handle Lock

Hinges

Push Bar

Door Closer

Smoke & Fire Curtains

Smoke Curtains is barriers placed as part of smoke management systems in a building to channelize the movement of smoke in a building towards extraction points.

A fire curtain is, in simple terms, a highly robust piece of fire-resistant material that remains discretely suspended from a ceiling, lobby or doorway, until it is lowered when the smoke or fire alarm within a building is triggered.



Fire Rated Drywall

Fireproof drywall is the common term; its industry name is Type X drywall. The thickness of this drywall is 5/8-inch, including all layers. Glass fibers are added to the board to help it retard fire. Also, because it is denser than normal gypsum-and-paper drywall, it takes longer for the fire to degrade it.



Fire Rated Damper

Fire dampers are passive fire protection products used in heating, ventilation, and air conditioning (HVAC) ducts to prevent the spread of fire inside the ductwork through fire-resistance rated walls and floors.



Electrical System



Fire & Health Safety Equipment's



Building Management System(BMS)

A building management system, otherwise known as a building automation system, is a computer-based control system installed in buildings that controls and monitors the building's mechanical and electrical equipment such as ventilation, lighting, power systems, fire systems, and security systems.



Video intercom System

A video door-phone (also known as a video door entry system or video intercom) is a stand-alone intercom system used to manage communication between a visitor at the entrance to a building, such as a (residential complex or a workplace, and a resident inside of the building).



PAVA & PABX System

Public Address and Voice Alarm systems allow safe and controlled building evacuation to be managed in the case of an emergency. Clear voice messages can be initiated from the system to aid building evacuation.

A business telephone system is a multiline telephone system typically used in business environments, encompassing systems ranging in technology from the key telephone system to the private branch exchange.



Surveillance System (CCTV)

A building management system, otherwise known as a building automation system, is a computer-based control system installed in buildings that controls and monitors the building's mechanical and electrical equipment such as ventilation, lighting, power systems, fire systems, and security systems.



DVR/NVR



Wi-Fi Camera



PTZ Camera



Bullet Camera



Dome Camera

Access Control & Time Attendance System

Access control systems are electronic systems that facilitate automated approval for authorized personnel to enter through a security portal without the need for a security officer to review and validate the authorization of the person entering the portal, typically by using a credential to present to the system to verify their authorization. A security portal is a door or passageway that creates an entry point in a security boundary.



Access Control Device



Electromagnetic Lock



Card Reader



Exit Switch



Proximity Card



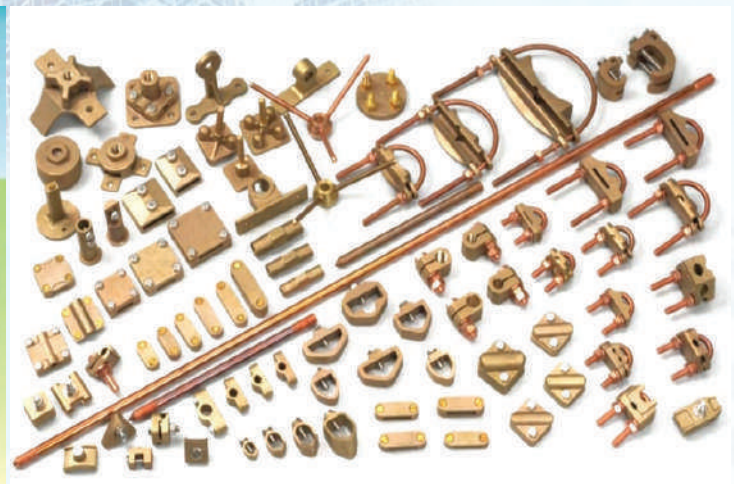
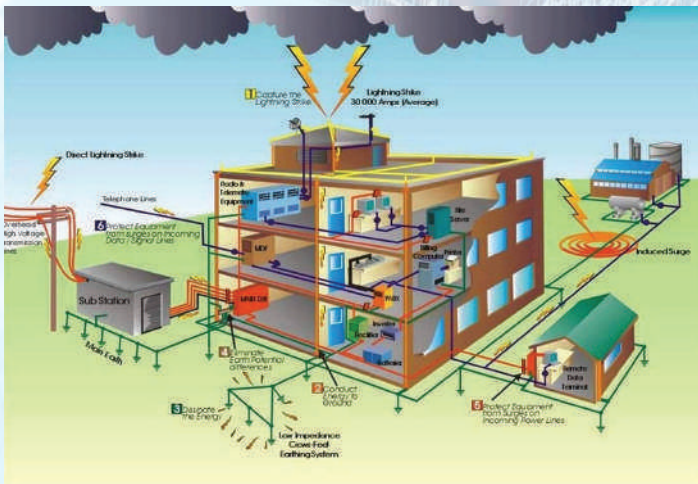
Safety Plan & Consultancy

A Safety Plan is a written document that describes the process for identifying the physical and health hazards that could harm workers, procedures to prevent accidents, and steps to take when accidents occur. ... The written safety plan is your blueprint for keeping workers safe.



Lightning Protection System (LPS)

The function of a lightning protection system is to protect structures from fire or mechanical destruction and to prevent that persons in buildings are injured or even killed. An overall lightning protection system consists of external lightning protection (lightning protection/earthing) and internal lightning protection (surge protection).



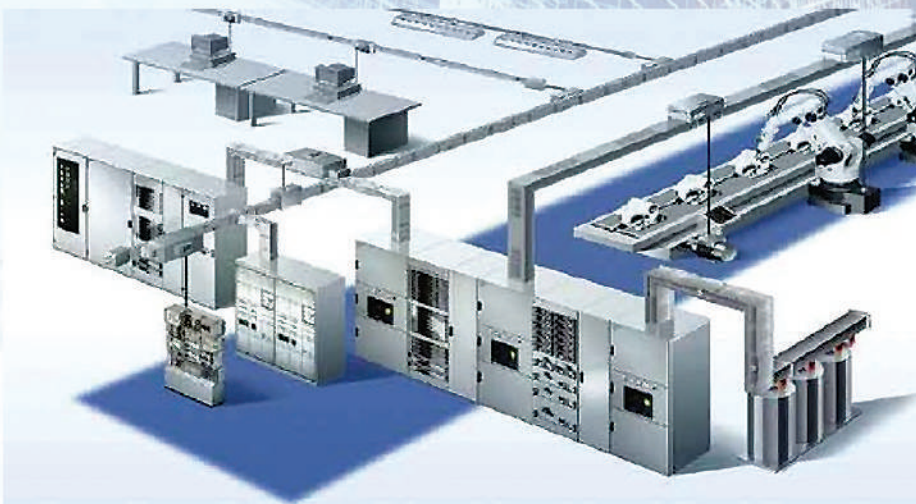
Electric: Substation



Substations generally have switching, protection and control equipment, and transformers. Substations themselves do not usually have generators, although a power plant may have a substation nearby. Other devices such as capacitors, voltage regulators, and reactors may also be located at a substation.

Busbar Trunking System

Busbars are now becoming irreplaceable simply because of the convenience and safety factor. Busbar trunking, also known as bus bar or bussbar, is a far more effective way to distribute power around your home or commercial premise than standard wiring, a busbar being a strip of aluminium, brass, or copper that conducts electric current within a switchboard, battery bank, substation, or distribution board



Water Spray System For Transformer & Fuel Tank Protection



Water spray systems are generally used for fire protection of flammable liquid and gas storage tanks, piping, pumping equipment, electrical equipment such as transformers, oil switches, rotating electrical machinery etc.

A Deluge system (automatic High Velocity Water Spray System) is a fixed fire protection system, which totally floods an area with pressurized water through a system of piping with open nozzles & sprinklers.



Our Certifications



QCS MANAGEMENT PVT. LTD.
MANAGEMENT SYSTEMS CERTIFICATION

Certificate of Registration

ISO 9001:2015 (Quality Management System)

RELIANT ENERGY & SAFETY TECHNOLOGY LTD

CORPORATE OFFICE: HOUSE: 13, ROAD: 01, SECTOR: 11, UTTARA, DHAKA-1230, BANGLADESH.
WARE HOUSE: WEST ALABDIRTEK, WARD: 15, CANTONMENT, PALLABI, DHAKA-1206, BANGLADESH

Scope of Certification:

SALES, TRADING & SERVICE OF FIRE FIGHTING & ELECTRICAL EQUIPMENT, FIRE FIGHTING RELATED TRAINING AND CONSULTANCY

Certificate Number : QCSMPL/INT/Q/A/0423

Issue Date : 02/03/2022 1st Surveillance Audit Within : 01/02/2023
Expiration Date : 01/03/2023 2nd Surveillance Audit Within : 01/02/2024
Re-certification Due Date : 01/03/2025



Partha Bagchi
Partha Bagchi
(Managing Director)

Validity of this Certificate is subject to Surveillance Audits to be conducted before scheduled due dates of surveillance audits as mentioned on the certificate, failing which the certificate will stand to be withdrawn and need to be treated as an initial certification process to reactivate its continuity on the register of ASCB and QCS. This Certificate is valid when confirmed by data listed on the "International Register of Quality Assessed Organizations" www.irqao.com. The authenticity & validity of this certificate may be re-affirmed by referring to our company website: www.reliant.com. Lack of fulfillment of conditions as set out on the "Certification Contract" (Annex 13) may render this certificate invalid. Any alteration, forgery or falsification of the content or appearance of this document is unlawful and offenders may be prosecuted to the fullest extent of law. This certificate remains the property of QCS and to be returned on request.



QCS MANAGEMENT PVT. LTD.
REGISTERED OFFICE: 37E/1/1310/2ND STREET MODERN PARK, GREENAGE APARTMENT - 2nd FLOOR,
SANTOSHUR, KOLKATA-700075, WEST BENGAL, INDIA.
Email: info@qcspl.com, Call: +91 8697724963, +91 8902447427, Website: www.qcspl.com
[License reference:201-807-04] Accredited by "Accreditation Service for Certifying Bodies, LLC"
ASCB Global
Global headquarters: The Green, Dover, DE, 19901, United States.



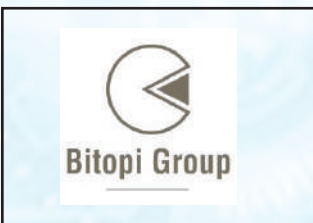
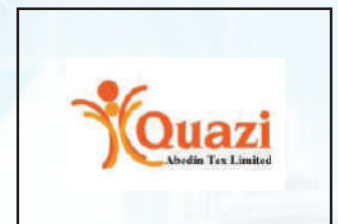
REGISTERED INFORMATION

REGISTRANT	RELIANT ENERGY & SAFETY TECHNOLOGY LTD
ADDRESS	CORPORATE OFFICE: HOUSE: 13, ROAD: 01, SECTOR: 11, UTTARA, DHAKA-1230, BANGLADESH. WARE HOUSE: WEST ALABDIRTEK, WARD: 15, CANTONMENT, PALLABI, DHAKA-1206, BANGLADESH DHAKA 1230 Bangladesh
MANAGEMENT REPRESENTATIVE	
TELEPHONE	
E-MAIL	qcskolkata2017@gmail.com
WEBSITE	
REGISTERED STANDARD	ISO 9001:2015
SCOPE OF ACTIVITIES	SALES, TRADING & SERVICE OF FIRE FIGHTING & ELECTRICAL EQUIPMENT, FIRE FIGHTING RELATED TRAINING AND CONSULTANCY
CERTIFYING BODY	QCS Management Pvt Ltd.
CERTIFICATION REFERENCE	QCSMPL/INT/Q/A/0423
ACCREDITOR	ASCB
IRQAO LISTING ID	C37665-72035
INITIAL ISSUE DATE	02 March 2022
LAST CERTIFICATION DATE	02 March 2022
REGISTRATION EXPIRY DATE	01 March 2023
CERTIFICATE STATUS	Full



THE ABOVE LOGOS (WHERE SHOWN) ARE APPLICABLE TO THE REGISTRANT'S CERTIFICATION STATUS.
Information displayed is provided by a third party who is solely responsible for its accuracy. Please refer to our Terms & Conditions for more information. Should you have concerns with the information provided contact us.
International Register of Quality Assessed Organizations (IRQAO Services Limited)
Registered Office: 20-22 Wentlock Road, London, N1 7GU, United Kingdom.
Tel +44 1202 61 21 26 www.irqao.com admin@irqao.com Reg No: 12731463

Our Major Clients



Brands





RELIANT
Energy & Safety Technology Ltd.

Reliant Energy & Safety Technology Ltd.

We Serve to Save

Corporate Office :
House: 13, Road: 01, Sector: 11, Uttara, Dhaka-1230, Bangladesh.

Chattogram Office :
R.F Quayum Heights, Zakir Hossain Road, Kulshi, Chattogram, Bangladesh.

+88 01710 494919, +88 01913 146384

info@reliant-est.com, info.reliant.est@gmail.com

www.reliant-est.com